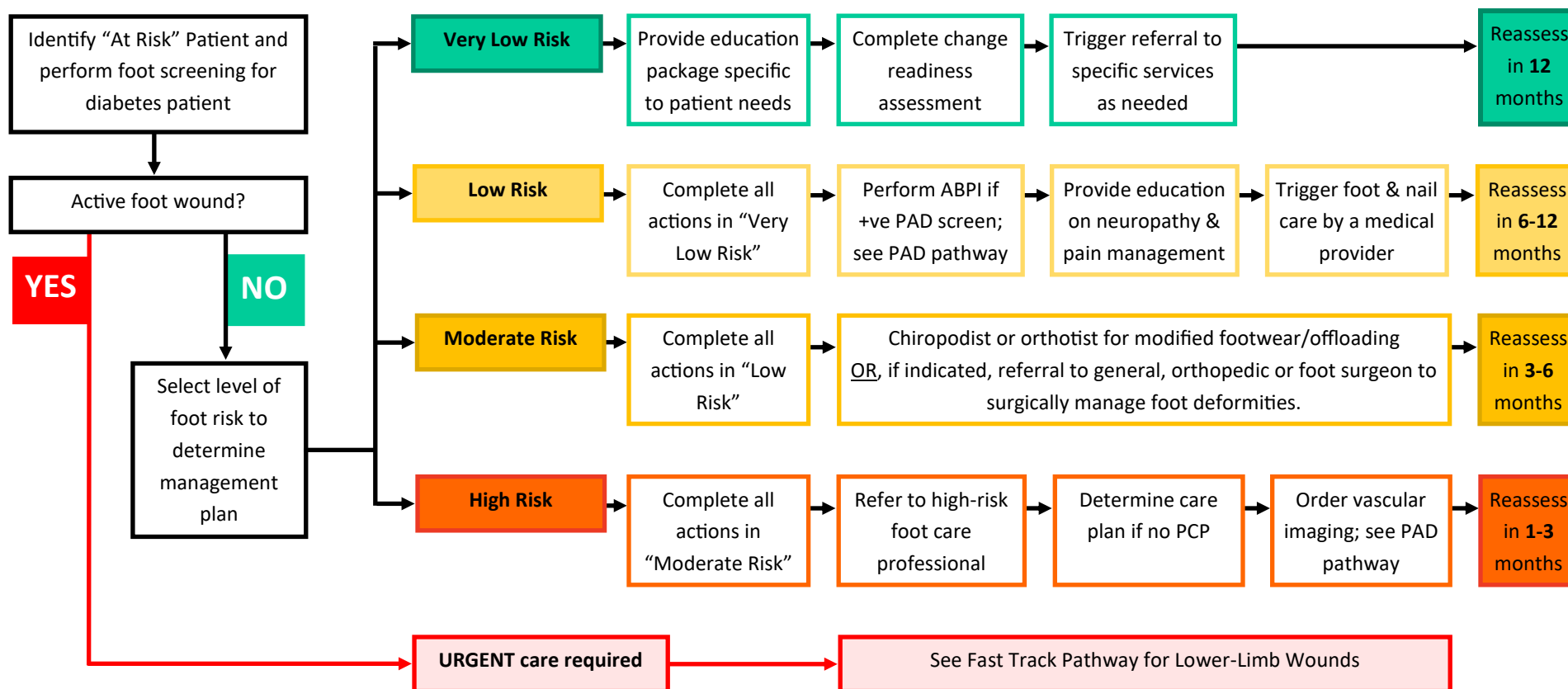


Referral Pathway Based on a Modified Inlow's Foot Screening for Risk Assessment

August/24

Start of Pathway: Identifying Screening Partners

- Primary Care Organizations
- Ontario Health atHome
- Acute Care Clinics
- Community Support Services (foot care programs)
- Diabetes Education Clinics/Programs
- Vascular Clinics
- Nursing Foot Care/Chiropody Clinics
- EMS/Paramedicine



Pathways are a recommended tool and consideration of holistic care, goals of care and patient needs are vital. Education and training for providers, patients and family are important to help achieve a desired state of care for patients at all levels of risk. Provider training will help with identifying patients at risk, performing foot screenings and escalating care for high-risk and urgent patients. Including the patient and family in education will help provide an overall awareness of risk factors and treatment for preventing lower-limb amputations.

Information adapted from:

Blanchette V, Kuhnke JL, Botros M, McCallum C, Evans R. Inlow's 60-second Diabetic Foot Screen: Update 2022.

Limb Preservation Journal. 2023;4(1):22-28. DOI: <https://doi.org/10.56885/HRJU7789>.

Hastings and Prince Edward OHT Lower-Limb
Preservation Demonstration Project

